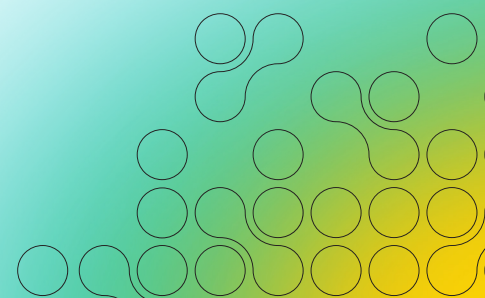


Breast Cancer Risk Assessment Tools



Three commonly used breast cancer risk assessment tools in Australia are iPrevent,¹ CanRisk² (BOADICEA), and IBIS³ (Tyrer-Cuzick).

Risk assessment tool (risk model used)	iPrevent (BOADICEA v3 and IBIS v7) ⁴	CanRisk (BOADICEA v6)	IBIS (Tyrer-Cuzick v8)
Individual can do an initial assessment*	✓	✗ [≠]	✓
RACGP “accepted clinical resource”	✓	✗	✗
Incorporates breast density	✓ [^]	✓ [£]	✓ [£]
Supports high risk breast MRI rebate#	✗	✗	✓
Incorporates BRCA1 and BRCA2	✗	✓	✓
Incorporates abnormal biopsy results	✗	✗	✓
10-year and lifetime risk (LTR) estimates	✓	✓	✓
Surveillance and risk-reducing recommendations	✓	✗	✓

* Based on known risk factors

≠ Health professional registration required

£ Average VBD%, available on the Volpara Scorecard, is validated for use in Tyrer-Cuzick v8 and BOADICEA (CanRisk)

The “clinically relevant evaluation algorithm” for risk estimation to support rebate eligibility for high-risk breast MRI (MBS item 63464) is Tyrer-Cuzick v8 (or later)⁵

^ iPrevent supports the 4 BI-RADS categories of breast density assessment only

References

1. Peter MacCallum Cancer Foundation. iPrevent™. Available at <https://www.petermac.org/iprevent>. [Accessed 28/03/2023]
2. University of Cambridge. CanRisk Version: v2.3.4. Available at <https://www.canrisk.org/>. [Accessed 28/03/2023]
3. IBIS Breast Cancer Risk Evaluation Tool. Available at <https://ems-trials.org/riskevaluator/>. [Accessed 28/03/2023]
4. Phillips KA, Liao Y, Milne RL, et al. Accuracy of Risk Estimates from the iPrevent Breast Cancer Risk Assessment and Management Tool. JNCI Cancer Spectr. 2019;3:pkz066. Published 2019 Sep 19. doi:10.1093/jncics/pkz066.
5. Australian Government Department of Health and Aged Care. Medicare Benefits Schedule (MBS) Online. Medicare Benefits Schedule – Item 63464. Available at <http://www9.health.gov.au/mbs/fullDisplay.cfm?type=item&q=63464&q1=item>. Accessed [28/03/2023]

mtk7939-3